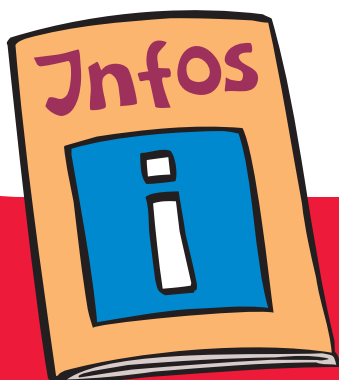


Tigrinisch



ዘቤታዊ ጎነጽ

ፈጻሙ ቅኑዕ ኣይኮነን!



BIG KOORDINIERUNG

Bei häuslicher Gewalt · Hilfe für Frauen und ihre Kinder

አብዚ ንኣሽቱ ናይ ሐበሬታ መጽሓፍቲ እንታይ ትሕዝቶ ኣሎ?

ንምንባብ ዝሕግዝ ኣገዳሲ ሐበሬታ

መቐድም: ኣገዳስነት/ጥቕሚ ናይ'ዚ ንእሽቶ ሐበሬታዊ መጽሓፍ እንታይ እዩ?

1:: ዘቤታዊ ጎነጽ እንታይ ማለት እዩ?

2:: ከመይ ዝበሉ ዓይነታት ዘቤታዊ ጎነጽ ኣለዉ?

3:: ተደጋጋሚ ጎነጽ

4:: ህጻናትን ጎነጽን

5:: ካብ ጎነጽ ከድሕኑ ዝኸእሉ መገዲታት:: መን ከሕግዝ ይኸእል?

ፖሊስ::

ሆትላይን ቢ.ኣይ.ጂ./BIG::

ሞያዊን ማእከላት ምክሪን ናይ ጣልቃ ኣብያተ-ጽሕፈትን::

መዓስከር/መዕቆቢ ደቂ-ኣንስትዮ::

ናይ ስደተኛታት ክፍሊታት-ገዛ/ኣፓርታማታት::

6:: ኣብያተ-ፍርዲ ብኸመይ ከሕግዝ ይኸእላ::

ጀዋልት-ሹትዝ-ጀሰትዝ/The Gewalt-Schutz-Gesetz [ንጎነጽ ዝከላኸል ሕጊ]::

ዝርዝር ኣድራሻታት

ሕጋዊ: ኣብዚ ንእሽቶ ሐበሬታዊ መጽሓፍ መን ይሰርሕ?

ንምንጻብ ዝሕግዝ ኣገዳሲ ሓበሬታ፡

እዚ ንእሽቶ ሓበሬታዊ መጽሓፍ ብንጹር ቋንቋ እዩ ተጻሒፉ ዘሎ።
ይኹንምበር፡ ኣብዚ ንእሽቶ ናይ ሓበሬታ መጽሓፍ ክበድ ዝበሉ
ውሑዳት ቃላት ኣለዉ።
እዞም ቃላት እዚኣቶም ደሚጃም ተጻሒፎም ኣለዉ።
ኣብዚ ጽሑፍ ከምዝበርሁ ኮይኖም ቀሪቦም ኣለዉ።



ብኛልል ዝበለ ቋንቋ

“ፈጸምቲ ጎነጽ” ዝብል ቃል ኣብዚ ንእሽቶ ናይ ሓበሬታ መጽሓፍ
እናሻዕ ተጠቒምናሉ ኣለና።

እዚኣቶም መብዛሕትኦም ደቂ-ተባዕትዮ እዮም፡

ንኣብነት፡

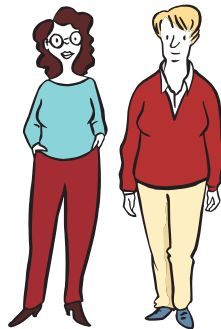
ምርዑ-ው ሰብኣይ፡ ተኛጻጻሪ፡ ኣኮ/ሓወቦ/ሰብኣይ ኣሞ/ሰብኣይ

ሓትኖ/፡ ኣቦሓጎ፡ ወዲ፡ ጎረቤት፡ ወይ ድማ ኣፍቃሪ።

"ፈጸምቲ ጎነጽ" ደቂ-ኣንስትዮ-ውን ክኾና ይኽእላ እየን።

ንኣብነት፡

ኣፍቃሪት፡ ኣደ፡ ወይ ድማ ጓል።



እዚ ኩሉ፡ ኣብዛ ንእሽቶ ናይ ሓበሬታ መጽሓፍ ኣሎ።

ንሕና ክንነግረኪ እንደሊ፡

ኣብ ከተማ በርሊን ሓገዝ ኣበይ ክትረኽቢ ትኽእሊ?

ዘቤታዊ ጎነጽ ኣጋጢሙኪ ዝፈልጥ እንተኾይኑ።

ኩሎም ኣድራሻታት ኣብ መወዳእታ ገጻት ናይ'ዚ ንእሽቶ ሓበሬ
ታዊ መጽሓፍ ተዘርዚሮም ኣለዉ።



መቼ ድም



ኣብ ብዙሓት መጻምድቲታት ጎነጽ ኣሎ።
 ዳርጋ ኩሉ ግዜ ድማ ደቂ-ኣንስትዮ እየን ግዳይ ናይ'ዚ ጎነጽ ዝኾና።
 ደቂ-ተባዕትዮ ድማ ዳርጋ ኩሉ ግዜ ፈጻምቲ ጎነጽ እዮም።
 ንኣብነት፡ ሰብኣይ ንሰበይቲ ክሃርማ እንከሎ።
 ወይ ድማ፡ ሰብኣይ ንኣፍቃሪቱ/መጻምድቲ እናጨደረ ከጉብዕብዓላን ከፈራርሓን እንከሎ።

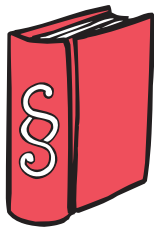


እዚ ጎነጽ'ዚ ኩሉ ግዜ ኣብ ገዛዩ ዘጋጥም።
 ኣብ ኣፓርታማ ወይ ኣብ መንበሪ-ቤት። ስለዚ፡ እዚ ጎነጽ'ዚ ዘቤታዊ ጎነጽ ተባሂሉ ክጥቀስ ይኽእል።

ዘቤታዊ ጎነጽ ብሕጊ ክልኩል እዩ።



ዝኾነ ሰብ ንሰበይቲ ክሃርም መሰል የብሉን።
 ዝኾነ ሰብ ንሰበይቲ ከፈራርህ መሰል የብሉን።
 ዝኾነ ሰብ ንሰበይቲ ክዕምጽ/ክብድል መሰል የብሉን።



በዚ ምክንያት፡ ጀዋልት-ሹትዝ-ጀስትትዝ/ Gewalt-Schutz-Gesetz [ንጎነጽ ዝከላኸል ሕጊ] ኣሎ።

እዚ ሕጊ'ዚ፡ ዝኾነ ሰብ ጎነጽ ከይጋጥም ንምክልኻል ዝግለመ እዩ።
 ዝበዝሕ ግዜ ደቂ-ኣንስትዮ እየን ጎነጽ ዘጋጥመን።

በዚ ምክንያት፡ እዚ ሕጊ ብፍላይ ንደቂ-ኣንስትዮ ኣገዳሲ እዩ።

- ክንዲ ዝኾነ፡ ጎነጽ ከጋጥመን የብሉን።
- በዚ ምክንያት ባዕለን ኣንጻር ጎነጽ ክከላኸላ ይኽእላ።

ንኹለን ደቂ-አንስትዮ ትብዓት ከነዕጥቅን ንደሊ።

ወላ ሓደ ሰብ ከሃርመኪ ወይ ከጉባዕብዓልኪ የብሉን።
ተገምጢልኪ ከትምክትዮ/ክትከስዮ ትኽእሊ ኢኽ!



አጆኽ. ንበይንኽ. አይኮንክን! ሓገዝ ሕተቲ!



ኩሎም አድራሻታት ኣብ መወዳእታ ገጻት ናይ'ዚ ንእሽቶ ሓበሬ
ታዊ መጽሓፍ ተዘሪዘሪኖም ኣለዉ።

ዘቤታዊ ጎነጽ ፈጸሙ ሕጋዊ ኮይኑ አይፈልጥን።

1። ዘቤታዊ ጎነጽ እንታይ ማለት እዩ?



ዘቤታዊ ዓመጽ ኣብ መንጎ ሰባትዮ ዘጋጥም።
ንሕድሕዶም ጽቡቕ ገይሮም ኣብ ዝፋለጡ።

ንኣብነት፡

- ኣብ መንጎ ሰብኣይን ሰበይቲን።
- ኣብ መንጎ ኣፍቃሪን ኣፍቃሪቱን።
- ወይ ድማ ኣብ ውሽጢ ስድራ-ቤት።



ደቂ-አንስትዮ ዳርጋ ዝበዝሕ ግዜ ግዳያት ናይ ዘቤታዊ ጎነጽ እዮን። ደቂ-ተባዕትዮውን ዝበዝሕ ግዜ ፈጸምቲ ጎነጽ እዮም።



ዘቤታዊ ጎነጽ ዝበዝሕ ግዜ ኣብ ገዛዮ ዘጋጥም።

- ኣብ ኣፓርታማ።
- ወይ ድማ ዝኾነ ሰብ ክርእዮ/ክሰምዖ ኣብ ዘይክእል ቦታ።

በዚ ምኽንያት፡ ዝበዝሕ ግዜ ነቲ ጎነጽ ዝፈልጦ ሰብ የለን።

ዘቤታዊ ጎነጽ፡

- ሰብኣይ ንሰበይቲ ክሃርማ እንክሎ።
 - ዓቕሚ ኣዳም ዝበጽሐ ወዲ ንኣደኡ ክፈራርሃ እንክሎ።
 - ኣብ ዓቕሚ ሄዋን ንዝበጽሐት ጓሉ ጠብ እንተ ኣቢሉዎ/እንተ ተን ኪፉዎ።
- ወይ ድማ ከምኡ ክገብራ ንሳ ዘይትደሊ እንተኾይና።



እዚ ጎነጽጎዚ ንኹለን ደቂ-አንስትዮ ከጋጥመን ይኸእል እዩ።



- ዋላ ጀርመናዊት ሰበይቲ ትኹን ኣይትኹን ብዘየገድስ።
ወይ ካብ ካልእ ሃገር ዝመጸት ሰበይቲ ትኹን ኣይትኹን።



- እታ ሰበይቲ ክንደይ ዕድመኣ ብዘየገድስ።

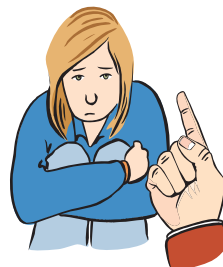


- ስንክልና ይሃልዎ ኣይሃልዎ።



- እታ ሰበይቲ እንታይ ትሰርሕ ብዘየገድስ።
ሰራሕተኛ ናይ ገዛ ትኹን ኣይትኹን።

ብዙሓት ደቂ-አንስትዮ ሕንክት ይስምዑን።
ምክንያቱ ሰብኡተን ስለዘይግደሱለን/ብሕማቕ ስለዝሕዙዎን።
ምክንያቱ ሰብኡተን ጎነጻዊያን ስለዝኾኑ።
ከምኡ'ውን ጌገኛታት/ባደለኛታት ባዕለን ኮይኑ ስለዝስምዑን።



ብዚ ምክንያት ብዙሓት ደቂ-አንስትዮ ሓገዝ ኣይሓታን እዮን።
ኣብ ገዛ'ውን ብዛዕባ'ቲ ዘጋጠመን ጎነጽ ኣይዛረቡሉን እዮን።



ንሕና ትብዓት ከነዕጥቅኪ ኢና ንደሊ።

ሕንከት ከስምዓኪ የብሉን።
በቲ ኣብ ልዕሊኺ ዝተፈጸመ ጎነጽ ነብሰ-ወቐሳ ከስምዓኪ የብሉን።
ጌገኛ እቲ ፈጻሚ ጎነጽ እዩ።

በጃኺ ሓገዝ ሕተቲ።

ንደቅኺ ውን ሓገዝ ሕተትሎም/ኣናድይሎም።



ብዛዕባቲ ዘጋጠመኪ ጎነጽ ድማ ተዛረብሉ/ሓብርሉ።
ጎነጽ ክኸወል ዝኸእል ምስጢር ኣይኮነን።
ጎነጽ ብሕታዊ ጉዳይ ኣይኮነን።



ምናልባት ክትፋትሒ ወይ ክትፈላለዩ ትደልዩ ትኾን።
ንበይንኺ ክትነብሪ ውን ትደልዩ ትኾን።
ወይ ድማ ንበይንኺ ምስ ደቅኺ ክትነብሪ ትደልዩ ትኾን።



2። ከመይ ዝበሉ ዓይነታት ዘቤታዊ ጎነጽ ኣለዉ?

ብዙሓት ዝተፈለለዩ ዓይነታት ዘቤታዊ ጎነጽ ኣለዉ።



ኣካላዊ ጎነጽ፡

- እንተደኣ ሓደ ሰብ ሃሪሙኪ/ጸፊዑኪ።
- እንተደኣ ሓደ ሰብ ደፊኡኪ/ ቀሊዑኪ።
- እንተደኣ ሓደ ሰብ ሓኒቐኪ/ዓቢሱኪ።
ከምኡ'ውን ከተተንፍሲ ምስዘይትኽእሊ።



ስምዒታዊ ጎነጽ

- እንተደኣ ሓደ ሰብ ብሕማቕ ዝሕዘኪ/ዝርእየኪ ኮይኑ።
- እንተደኣ ሓደ ሰብ ጸሪፉኪ/ኣዋሪዱኪ።



እንተደኣ ሓደ ሰብ ኣርዒዱኪ።

ወይ ድማ እንተደኣኣፈራራሪሑኪ፡

- ነቶም ቆልዑ ክወስዶም ምጃኑ።
- ንዓኺ ክጎድኣኪ ምጃኑ።
- ንዓኺ ክባርረኪ/ክሰጎኪ ምጃኑ።
ካብ ዝህ ከውጽኣኪ። ወይ ድማ ካብ ሃገር ከውጽኣኪ/ክሰጎኪ።





ጾታዊ ጎነጽ፡

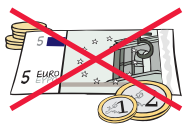
- እንተደክ ሓደ ሰብ ብዘይ ድሌትኪ ተንኪፉኪ/ጠብ ኣቢሉኪ።
- እንተደክ ሓደ ሰብ ስእለ-ጽዮፍ/ፖርኖግራፊ ክትርእዩ ብሓይሊ ኣገዲዱኪ።
- ምግባስ/ጾታው ዓመጽ።

እንተደክ ሓደ ሰብ ብዘይፍቓድኪ ምሳኺ ጾታዊ ርክብ ፈጸሙ።
ንስኺ ድማ “ኣይፋልካን” እንተደክ ኣልክዮ።



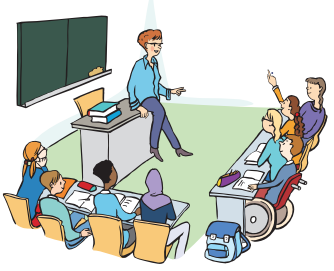
ተነጽሎ፡

- እንተደክ ሓደ ሰብ መቐፋፋኪ/ኣሲሩኪ። ከምኡውን ንኸይትወጺ እንተኸልኪሉኪ።
- ቴለፎን ንኸይትጥቀሚ ፍቓድ እንተኸለኡኪ።
- እንተደክ ምስ ካልኣት ሰባት ንኸይትዘራረቢ ክልኪሉኪ።



እዚኛውን ጎነጽ እዩ

- እንተደክ ስራሕ ንኸይትሰርሒ ክልኪሉኪ።
- እንተደክ ሓደ ሰብ ገንዘብኪ መንጠሉኪ።
- እንተደክ ኣብ ትምህርቲ ናይ ቋንቋ ንኸይትሳተፊ ፍቓድ ክለኡኪ።



- እንተደክ ሰበይቲ ኣፍቂርኪ። ስድራቤትኪ ድማ ንዕኡ እንተኣወጊዘሞ።
- እንተደክ ምስ ሓደ ሰብ ተምርግዎ ኣለኺ ኮይንኪ። ነቲ ሰብቲ ድማ ዘይትደልዮ እንተኮይንኪ።

ብድሕሪ ዙሪያ ላይ ክትሓቲ የድልየኪ።
 እዚ ኣገዳሲ/ጠቓሚ እዩ።
 ምኽንያቱ ጎነጽ ባዕሉ ደው ክብል ስለዘይክእል።
 ብዙሕ ግዜ ናብ ዝኸፍኦ ከምርሕ እዩ ዝርእዮ።



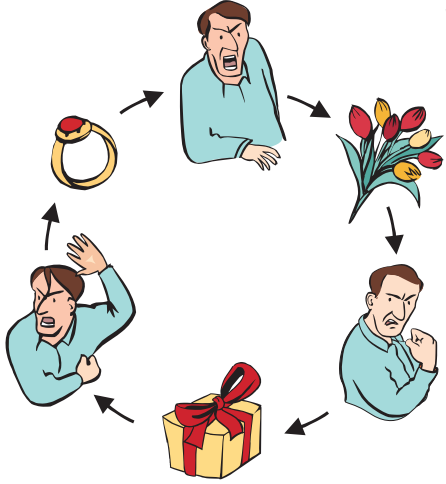
እንተኾነ፡ ብዛዕባኡ ገለ ነገር ክትገብሪ ትኽእሊ ኢኺ!
 ብዛዕባኡ ንካልኦት ሰባት ሓብሪ/ንገሪ።

ንኣብነት፡

- ንመሓዛኺ ብዛዕባኡ ኣዕልልያ።
- ወይ ምስ መሳርሕትኺ ኣዕልልሉ።
- ወይ ድማ ምስ ካልኦት ሰባት ኣዕልልሉ።
 ንሰኺ እትኣምንዮም ሰባት።
- ናብ ፖሊስ ኪዲ።
- ከምኡ ድማ ናብ ማእከል ምኽሪ ኪዲ



3። ተደጋጋሚ ጎነጽ



ጎነጽ ባዕሉ ከግታእ ኣይክእልን እዩ።
 ሓደ ሓደ ግዜ፡ ንዝተወሰነ እዋን ባዕሉ ይመሓየሽ እዩ።
 ምናልባት ብድሕሪ ደብዳቤ እቲ ጎነጽ ኣብቂዑ ኣልኪ ክትሓሰቢ ትኸእሊ ኢኹ። እንተኾነ ግዳ፡ እቲ ጸገም ከይተኣልየ እዩ ዝተርፍ።
 ብድሕሪ ደማ ከምእንደገና ጀሚሩ ናብቲ ዝነበሮ ይምለስ።
 በዚ ምክንያት ተደጋጋሚ ጎነጽ ተባሂሉ ይጽዋዕ።

ስለዚ እዚ ዝሰዕብ ከም ኣብነት ክጥቀስ ይኸእል፡

- መጻምድትኺ ከፈራርሃኪ እንክሎ።
 ደጋጊሙ ክሃርመኪ እንክሎ።
 ከም ውጽኢቱ፡ መጻምድትኺ ሓያልን ንፉዕን ኮይኑ ክስምዖ እንክሎ።
 ንስኺ ግን ኣብ ኣዝዩ ሕማቕ ኮነታት ከለኺ።



- ብድሕሪ መጻምድትኺ ምናልባት ተጋጊየ ኢሉ ክጠግስ ይኸእል።
 ይቕሬታ ደማ ይሓተኪ።
 ብድሕሪ ሕጂ ፈጺሙ ከምዘይብድለኪ ቃል ይሓትወልኪ።
 ህያባት ይህበኪ።



- ብድሕሪ ንስኺ እንደገና ጽቡቕ ይስማዓኪ።
 ንስኺን መጻምድትኺን እንደገና ደሓን ትኾኑ።
 ምናልባት እንደገና ከተፍቅርዮ ትጅምሪ።



- ግና እንደገና ኣመሉ ይጅምር።
 እቲ ጸገም ኣብ ቦታኡ ይኸወን።
 መጻምድትኺ እንደገና ከፈራርሃኪ ይጅምር።

- ንስኺ ደማ እንደገና ክትፈርሒ ትጅምሪ።
 እቲ ጎነጽ ምናልባት ዝኸፍኦ መልክዕ ክሕዝ ይኸእል።

4። ህጻናትን ጎነጽን

ብፍላይ ንህጻናት ሕማቕ እዩ።
እንተደኣ ጎነጽ ዘጋጥሞም ኮይኑ!



ገለ ህጻናት ካብ ካልእ ሃገር ሃዲሞም
ዝመጹ እዮም።

ሃዲሞም።
ምኽንያቱ ኩናት ስለዝተወልዐ።



ንህይወቶም ስለዝሰግኡ።
ወይ ድማ ኣብ መገዲ ሕማቕ ነገር ስለዝረኣዩ።

ኣብ ስድራ-ቤት ጎነጽ ከጋጥም እንከሎ ህጻናት'ውን ይፈልጡ እዮም።
ነቲ ጎነጽ ክርእይዎ፣ ክሰምዑዎን ክድህስሰዎን ይኽእሉ እዮም።



ህጻናት ብዙሕ ግዜ ግዳያት ናይ'ቲ ዝፍጸም ጎነጽ እዮም።
ይቕጥቀጡ/ይህረሙ እዮም።

ወይ ድማ ምፍርራሕ ይወርዶምን ይርዕዱን እዮም።
ኣብ ገለ እዋን፣ ህጻናት'ውን ጸታዊ ዓመጽ የጋጥሞም እዩ።





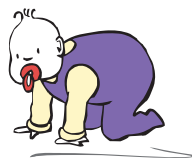
ጎነጽ ንህጻናት ኣገዩ ሕማቕ እዩ።
ኣብ ኣተዓባብያኦም ድማ ይብድሎም/ በሰላ ይገድፈሎም።

- ምናልባት ዘባህርር ሕልምታት ክሓልሙን ድቃስ ክሰኢኑን ይኸእሉ።
- ዝድቅሱሉ ዓራት ኣብ እዋን ለይቲ ብሸንቲ ክጠልቅዩዎ ይኸእሉ።
- ክርዕዩ ይኸእሉ።
- ወይ ድማ ክቕየሩ/ባህርያቶም ክልውጡ ይኸእሉ።



ገለ ህጻናት ዝን ክብሉን ክጭነቑን።
ገለ ህጻናት ድማ ይቑጥዑን ንኸልኡት ህጻናት ይተሃራረሙን።

- እዞም ህጻናት ደጊም ክጻወቱ ኣይክእሉን።
- ገሊኦም ድማ ትምህርቶም ብጽቡቕ ክከታተሉን/ክጽንዑን ኣይክእሉን።



ህጻናት ካብ ጎነጻዊ ተግባራት ውሑሳት ክኾኑ ኣለዎም!
ኩሎም ህጻናት ካብ ጎነጽ ናጻ ኮይኖም ክዓብዩ ኣለዎም።
እዚ ከኣ መሰሎም እዩ።



ንህጻናት ዝኸዉን ፍሉይ ሓገዝ ኣሎ።
በጃኹ ነቶም ህጻናት ሓገዝ ርኽብሎም።
ንኣብነት ካብ ፖሊስ። ወይ ድማ ኣብ ማእከል ምኽሪ።
ወይ ውን ኣብ መዕቆቢ ደቂ-ኣንስትዮ።

ኣድራሻታቶም ኣብ መወዳእታ ገጻት ናይ'ዚ ንእሽቶ ሓበሬ
ታዊ መጽሓፍ ክርከብ ይኸእል።

5። ካብ ጎነጽ ከድሕኑ ዝኸለሉ መገዲታት። መን ክሕግዝ ይኽእል?



ፖሊስ ክሕግዞኪ ይኽእል እዩ።

ንፖሊስ ብኸመይ ክትረኽቡዮ ትኽእሊ?

እንተደኣ ጎነጽ የጋጥመኪ ኣሎ ኮይኑ፡ ንፖሊስ ክትጽውዒ ትኽእሊ ኢኺ።



- በዚ ናይ ህጹጽ ረዲኤት ቁጽሪ ቴሌፎን ክትድውሊ ትኽእሊ ኢኺ 110።
- ናብ ፖሊስ ክትከዲ ትኽእሊ ኢኺ።
ኣብ እንዳ ፖሊስ ኩሉ ግዜ ሓደ ተቐባሊ ጋሻ ኣሎ።
ብዘይ ዕረፍቲ ን24 ሰዓታት።
ቀትሪን ለይቲን።
ናይ ጥርጉን ጸብጻብኪ ናብኡ ከተቐርቢ ትኽእሊ ኢኺ።
ብፋክስ ውን ብቁጽሪዘወ ክትልእኩ ትኽእሊ።

ፖሊስ እንታይ ይሰርሕ?

ጎነጽ የጋጥመኪ እንተደኣ ሃልዩ ኮይኑ፡ ንፖሊስ ክትጽውዕዮ ትኽእሊ ኢኺ።
ብድሕሪዚ ፖሊስ ክመጻኪን ክሕግዞኪን እዩ።
ፖሊስ ከምዚ ኢሉ ሕቶታት ክሓተኪ እዩ፡ ናይ ብሓቂ እንታይ ኢኺ ኮይንኪ?



ብድሕሪዚ እቲ ፖሊስ ኣብ ፋይሉ ገበናዊ ጸብጻብ ክምዝግብ እዩ።
ፖሊስ ነዘም ዝሰዕቡ ከረጋግጾም እዩ፡ ኣብ ሓደጋ ዲኺ ዘለኺ?
ፈጻሚ ናይዚ ጎነጽ ገና የፈራርሃኪ ድዩ ዘሎ?



ብድሕሪዚ ፖሊስ ነቲ ፈጻሚ ጎነጽ ካብቲ ኣፓርታማ ከውጽኦ ይኽእል።
ወይ ድማ ካብቲ ገዛ ከውጽኦ ይኽእል።
ክሳብ ንኸልተ ሰሙን ዝኣክል ድማ ደጊሙ ዘይከምለስ ይኽእል እዩ።
እዚ ከኣ ንስለ ድሕነትኪ/ውሕስነትኪ ተባሂሉ ዝገበር እዩ።
ብድሕሪዚ ናይ ክልተ ሰሙን ግዜ ይህልወኪ።



ብዛዕባዚ ክትሓሰቢ ትኽእሊ ኢኺ፡
ኣብ ዝቐጽል እንታይ ክትገብሪ ከምእትደልዩ።

ፖሊስ ከምዚ ኢሉ ክሕብረኪ እዩ፡

- ነዚ ሕጂ ክትገብርዮ ትኽእሊ ኢኺ።
- እዚኣቶም መሰላትኪ እዮም።
- ኣብኡ ምኽሪን ሓገዝን ክትረኽቢ ኢኺ።



ፖሊስ ብዘይካዚ ናብ ውሑስ ቦታ ከምጽኣኪ ይኽእል እዩ።
ንኣብነት ናብ መዕቆቢ ደቂ-ኣንስትዮ ከምጽኣኪ ይኽእል።
እንተደኣ ድሌት ሀለኪ ኮይኑ።
ከምኡ ድማ እንተደኣ ኣብቲ መዕቆቢ ደቂ-ኣንስትዮ ውሕስነት ዝሰማ
ዓኪ ኮይኑ።

- ሓገዝ ክትረኽብሎም እትኽእሊ ብዙሓት ቦታታት ኣለዉ።
- ብቴለፎን።
- ኣብ ማእከል ምኽሪ።
- ኣብ መዕቆቢ ደቂ-ኣንስትዮ።
- ኣብ ውሑስ ኣፓርታማ።
- ኣድራሻታቱ ስቱር/ምስጢራዊ እዩ።
- ገለ ኣፓርታማ ኣፓርታማ ስደተኛታት ተባሂሉ ይጽዋዕ።



ኣብ ዝኾነ ቦታ ከምዚ ክትብሊ ትኽእሊ፡
እዚ ኮይነ/ከምዚ ኣጋጢሙኒ።
እቶም ኣብኡ ዝርከቡ ሰራሕተኛታት ነቲ ዘካፈልኩም ምስጢር
ንዝኾነ ሰብ ኣይነግሩልኩን እዮም።
እዚ ከኣ ምዕቃብ ምስጢራዊነት ተባሂሉ ይጽዋዕ።



030.611 03 00

BIG HOTLINE

Bei häuslicher Gewalt · Hilfe für Frauen und ihre Kinder

ሓገዝ ብቴለፎን

ናብ ሆትላይን ቢ.አይ.ጂ/ BIG ክትድውሊ ትኽእሊ ኢኺ።

ሆትላይን ቢ.አይ.ጂ/BIG እንታይ እዩ?

ቢ.አይ.ጂ/BIG ማለት፡ ቢኤርሊነር/erliner ኣይኒሽቴሽ ጀገን/initiative gegen ጂኢዋልት ኣን ፍራውን/ewalt an Frauen. [ኣንጻር ጎጎጽ ደቂ-ኣንስትዮ ዝዓለመ ተበግሶ በርሊን]

ሆትላይን ድማ ነዚ ዝስዕብ ዝውክል ካልእ ቃል እዩ፡ ምኽሪ ብቴለፎን። ሓገዝ ክትደልዩ ከለኺ ናብኡ ክትድውሊ ትኽእሊ ኢኺ።

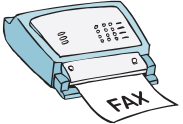


- ቋንቋ ጀርመን ወላ ኣይትኽእሊ/ኣይትምለኺ ጸገም የብሉን።
- ሓጋዚት ኣስተርጓሚት ኣላ።
- ንሳ ክትትርጉም እያ።
- እንታይ ትብሊ ከምዘለኺ።
- ካልኣትውን ንግኺ እንታይ ይብሉኺ ከምዘለዉ።

መዓልታዊ ንሆትላይን ቢ.አይ.ጂ/BIG ክትረኽቡዎም ትኽእሊ ኢኺ።

ኣብ ዝኾነ ግዜ።
24 ሰዓታት ኣብ ስራሕ ኣለዉ።

- ክትድውልዎም ትኽእሊ ኢኺ።
- ወይ ድማ ኢመይል ክትጽሕፍሎም ትኽእሊ ኢኺ።
- ወይውን ፋክስ ክትልእክሎም ትኽእሊ።



ስምኪ ክትጠቐሲ/ክትነግሪ ኣየድልየኪን እዩ።
እንተደኣ ዘይደሊኺ።

መግስ እዩ ሆትላይን ቢ.አይ.ጂ/BIG ሓገዝ ክልግሰልኪ ዝኸእል?



- እንታይ ክትገብሪ ከምዘለኪ ብልክዕ ዘይተፍልጢ እንተ ኮይንኪ።
- እንተደኣ ነዚ ዘይትፈልጢ ኮይንኪ፡
ንሱ ጎነጽ ድዩ?
- እንተደኣ ነዚ ዘይትፈልጢ ኮይንኪ፡
ሓገዝ ኣበይ ትረኽቢ?

- እንተደኣ ኣብ መዕቆቢ ደቂ-ኣንስትዮ ቦታ ትደልዩ ኣለኹ ኮይንኪ ወይ ድማ ኣብ ኣፓርታማ ስደተኛታት።



- ኣብ ቅድሚታ ቤት-ፍርዲ ናይ ጥርግን ክታማት ከተቐርቢ እንተደለኹ።
ንኣብነት፡
መጻምድትኺ ናብ ጥቓኺ ከይቀርብ ወይ ከይመጽእ ይኸእል እዩ።
ምእንቲ መጻምድትኺ ናብ'ቲ ትቐመጥሉ ኣፓርታማ ይኹን ገዛ ክመጽእ ከይፍቀደሉ።



ብድሕሪ ዚ እንታይ ይኸውን?

እቶም ሰራሕተኛታት ከማኸሩኺ እዮም።
ምኽሪን ሓበሬታን ክህቡኺ እዮም።



ሓደ ሰራሕተኛ ውን ምሳኺ ክራኸብ እዩ። ኣብ ውሑስ ቦታ።
ኣብኡ፡ ክልተኹም ከምዚ ኢልኩም ኢሂን ምሂን ክትበሃሃሉ ትኸእሉ።

- እንታይ ሓገዝ'ዩ ዘድልዩኪ ዘሎ?
- ሕጂ እንታይ ኮይንኪ ኣለኹ?

ሞያውያን ማእከላት ምክርን ናይ ጣልቃ ኣብያተ-ጽሕፈታትን እዚአተን፡ ዘቤታዊ ሃገር ንዘጋጠመን ደቂ-ኣንስትዮ ናይ ምክር ኣገልግሎት ዝህባ እየን።



ኣድራሻታተን ኣብ መወዳእታ ገጻት ናይዚ ንእሽቶ ሓበሬታዊ መጽሓፍ ክትረኽብዮ ትኽእሊ ኢኹ።

እቲ ማእከል ምክር መዓስ፣ ዩ ክሕግዘኪ ዝኽእል?



- ከምዚ ኢልኪ ክትዛረቢ ድሌት እንተደኣ ሀለኪ ኮይኑ፡ እዚ ንዓይ ኣጋጢሙኒ።
- እንተደኣ ሃገር የጋጥመኪ ኣሎ ኮይኑ፡ ከምኡ ድማ እንተደኣ እንታይ ክትገብሪ ከምዘለኪ ገና ዘይትፈልጢ ኮይንኪ።
- ብምክንያት ዘቤታዊ ሃገር ፖሊስ ናብ ቤትኪ እንተበጺሑ፡ ምናልባት ወግዓዊ ናይ ጥርግን ፋይል ምስእትኸፍቲ።



- ፖሊስ ነቶም ፈጻሚቲ ሃገር ከባርሮም ይኽእል።

- ካብ መጻምድትኺ ክትፈላለዩ ትኽእሊ። ምክንያቱ ንሱ ስለዘፈራርሃኪ ወይ ስለዝሃርመኪ። ግና ንባይንኺ ክገድፈኪ ኣይካኣለን ዘሎ። ንዓኺ ናይ ምክልባት/ምስቓይ ተግባራቱ ገና ይቐጽሎ።



- እንተደኣ ምክርን ሓገዝን ትደልዩ ኮይንኪ፡ ዋላ ንነዊሕ ግዜ ይኹን።



- ምናልባት ሃገር ዘጋጥማ ዘሎ ጓል-ኣንስተይቲ ክትፈልጢ ትኽእሊ ትኾን። ነታ ጓል-ኣንስተይቲ ክትሕግዝያ ድማ ትደልዩ ትኾን።

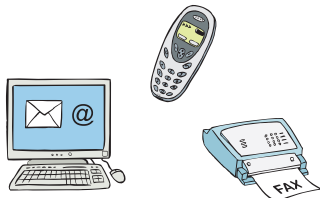


- እቲ ማእከል ምኽሪ፡ ካብ ካልኣት ሃገራት ንዝመጸ ደቂ-
ኣንስትዮ ውን ሓገዝ ይገብረለን እዩ
ምናልባት ኣብ ዝኸኸሉ ጎነጽ የጋጥመኪ ክህሉ ይኸእል እዩ።
ወይ ድማ ኣብ ውሽጢ ዝሃዘ።
ግና ካብ መጻምድትኺ ምፍልጋይ የፍርሓኪ።
ርዲድኪ ኣለኺ።
መወዳእታኡ ኣብ ጀርመን ናይ ምንገር ፍቓድ ንሓዋሩ ከይትኸ
ልኢ።



ሰራሕተኛ ናይቲ ማእከል ምኽሪ
ነዞም ጸገማት እዚኣቶም ኣብ ምፍታሕ ክሕግዘኪ ይኸእል እዩ።
ሕጋዊ ምኽሪ ውን ኣሎ።

ንማእከላት ምኽሪ ብኸመይ ክትረኽቡዎም ትኸእሊ?

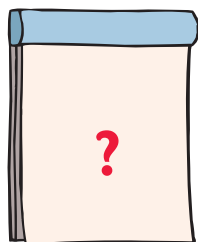


- ናብ ማእከል ምኽሪ ክትድወሊ ትኸእሊ።
ወይ ድማ ብቴሌፎን ጽሑፋዊ መልእኽቲ/SMS ክትሰዲ
ትኸእሊ።
- ብኢመይል ክትጽሕፍሎም ትኸእሊ።
- ወይ ውን ፋክስ ክትልእክሎም ትኸእሊ።



ስምኪ ክትጠቐሲ/ክትነግሪ ኣየድልዩክን እዩ።
እንተደኣ ዘይደሊኺ።

ብድሕሪ ዚ እንታይ ይኸውን?



ኣብቲ ማእከል ምኽሪ ናይ ርክብ ቆጶራ
ክተሓዘልኪ እዩ።
እንተደኣ ደሊኺ ድማ፡ መሰነይታ ዝኾነኪ ሰብ ክትማልኢ ትኸእሊ።

እቲ ሰራሕተኛ ብድሕሪ ዕላል የዕልለኪ፡
ብዛዕባ ሕቶታትኪን ስራሕኪን።



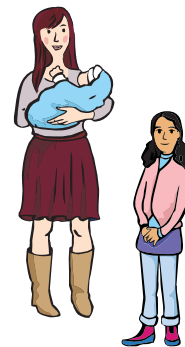
ቋንቋ ጀርመን ብዙሕ ዘይትመልከዮ እንተኮይንኪ፡ ኣስተርጓሚ ኣብኡ ክህሉ እዩ።
ንሳ ክትትርጉሞ እያ፡
እንታይ ትብሊ ከምዘለኺ።
ካልኣትውን ንግኺ እንታይ ይብሉኺ ከምዘለዉ።

እቲ ሰራሕተኛ ንግኺ ክሕግዘኪ እዩ።
ንኣብነት፡ ዋላ ኣብ ቅድሚታ ቤት-ፍርዲ።
ወይ ድማ ምስ ሰብ-መዚ መንግስቲ።
ኣብኡውን ሓገዝ ዘድልዩኪ እንተኾይኑ።



ኣብ ማእከል ምኽሪውን ሕጋዊ ኣገልግሎት ምኽሪ ኣሎ።
ንኣብነት ኣብዘም ዝሰዕቡ ጉዳያት፡

- መሰላትኪ እንታይ እዮም?
- ኣንጻርቲ ፈጻሚ ጎነጽ ከመይ ኣቢልኪ ክሲ ትምስርቲ?
- ጠበቓ የድልዩኪ ድዩ? መንዩ ነቲ ሕጊ ዝፈልጥ።
- ኣብ ቤት-ፍርዲ እንታይ ይኸውን/የጋጥም?
- መን ነቶም ቆልዑ ክናብዮም ሓላፍነት ይወሃቦ?
- ብዛዕባ መሰል ናይ ነባርነት ከ?
እንተደኣ ካብ ካልእ ሃገር ዝመጻኺ ኮይንኪ።



እንተደኣ ሓለዋ/ውሕስነት ዘድልዩኪ ኮይኑ፡ እቲ ሰራሕተኛውን ክሕግዘኪ እዩ።
ምሳኺ ኮይኑ መዕቆቢ ደቂ-ኣንስትዮ ከዳልዩኪ እዩ።

ኣብ ማእከል ምኽሪ፡ ንህጻናት ዝወሃብ ኣገልግሎታትውን ኣሎ።
ህጻናት ኣብኡ ክናበዩ/ክጸንሑ ይኸእሉ።
ሽዑ ብሰላም ከተዕልሊ/ክትዛረቢ ትኸእሊ።





መዕቆቢ ደቂ-አንስትዮ።

መዕቆቢ ደቂ-አንስትዮ እንታይ እዩ?

እንተደአ መጻምድትኺ ጸፊዑኪ ወይ ኣፈራሪሁኪ፡
ናብ መዕቆቢ ደቂ-አንስትዮ ክትከዲ ትኽእሊ።
ኣብ መዕቆቢ ደቂ-አንስትዮ ድሕነትኪ ውሑስ እዩ።
ኣድራሻታቱ ስቴር/ምስጢራዊ እዩ።



ደቂ-አንስትዮ ጥራይ እየን ኣብ መዕቆቢ ደቂ-አንስትዮ ዝሰርሓ።
ኣብ ዝኾነ እዋን ናብ መዕቆቢ ደቂ-አንስትዮ ክትከዲ ትኽእሊ።
ዋላ ኣብ ግዜ ለይቲ



እንተደአ ካብ ካልእ ሃገር ዝመጸኺ ኮይንኪ።
ናብ መዕቆቢ ደቂ-አንስትዮ ክትከዲ ትኽእሊ ኢኺ።



ኣብ በርሊን ኣብ ዝርከብ መዕቆቢ ደቂ-አንስትዮ ዝኾነ
ክራይ ምኽፋል ኣየድልየክን እዩ።
ኣድላዩ እንተኾይኑ ኣብቲ መዕቆቢ ደቂ-አንስትዮ ንነዊሕ እዋን ክትነብሪ
ትኽእሊ ኢኺ።



ንደቅኺ ናብቲ መዕቆቢ ደቂ-አንስትዮ ምሳኺ ክትማልእዮም ትኽእሊ ኢኺ።
ሓደ ፍሉይ/ካብቲ ልሙድ ወጻኢ ዝኾነ ነገር ግን ኣሎ።
እንተደአ ልዕሊ 12 ዓመት ዕድመ ዘለዎ ወዲ ኣለኪ ኮይኑ።
ምስ ወድኺ ናብ ኩለን መዕቆቢታት ደቂ-አንስትዮ ክትኣትዊ ኣይትኽእ
ልን ኢኺ።



ኣብ መዕቆቢ ደቂ-አንስትዮ ንባዓልኪ ጥራይ ኢኺ ትእለዩ/ትናበዩ።

- በዓልኪ መግቢ ትሰርሒ።
- በዓልኪ ንብረትኪ ትሓጽቢ።
- ንደቅኺ'ውን በዓልኪ ኢኺ ትናብዮም/ትከናኹንዮም።

ንመዕቆቢ ደቂ-አንስትዮ ብኸመይ ክትረኽብዮም ትኸእሊ?

ናብ መዕቆቢ ደቂ-አንስትዮ ደውሊ።
 ንገዛእ ርእሰኹ ውን ሓገዝ ክትረኽቢ ትኸእሊ ኢኹ።
 እቲ ሰራሕተኛ፡ ምስኦም እትራከብሉ ናይ ቆጶራ ግዜ ብቴለፎን ክትብረኪ እዩ።
 ናብቲ ቦታ ትኸዲ።
 እቲ ኣባል ሰራሕተኛ ካብቲ ናይ ርክብ ኣኼባ ክወስደኪ እዩ።
 ወይ ድማ ካልእ ካብ መዕቆቢ ደቂ-አንስትዮ ዝመጸት ጓል-አንስተይቲ።
 ብድሕሪ ዚ፡ ምስኦ ናብቲ መዕቆቢ ደቂ-አንስትዮ ክትከዲ ኢኹ።



ቁጽሪ ቴለፎኑ ኣብ ዳሕረዋይ ክፋል ናይ ዚ ንኣሽቶይ ሓበሬታዊ መጽሓፍ ክትረኽብዮ ትኸእሊ።

ብድሕሪ ዚ እንታይ ይኸውን?

ኣብ መዕቆቢ ደቂ-አንስትዮ ድሕነትኪ ውሑስ እዩ።
 ናይ ብሕትኹ ገዛ ትወሃቢ።
 ንኸተዕርፍሉ ክትመጽኢ ትኸእሊ።



ብዛዕባቲ ኣብ ቀጻሊ ክትኮንዮ እትኸእሊ ክትሓሰቢ ትኸእሊ፡

- ናብ ናይ ገዛእ-ርእሰኹ ገዛ ክትግዕዚ ምደለኹ ዶ?
- ምስ ኣዝማድኪ ወይ መሓዙትኪ ክትጸንሒ ምደለኹ ዶ?
- ንበዓል ቤትኪ ክትፈትሕዮ ምደለኹ ዶ?



ዝኾነ ይኹን ሕቶ እንተሃልዩኪ፡ እቶም ኣብ መዕቆቢ ደቂ-አንስትዮ ዝርከቡ ኣባላት ክተሓጋዝኹ እዮም።
 ሓበሬታዊ ምኽሪን ኣድራሻታትን ክህቡኹ ይኸእሉ እዮም።
 ኣደታትን ህጻናትን ዝያዳ ሓገዝ ዝረኽቡሉ ቦታ ኣበይ እዩ?



ደቂ-አንስትዮ ኣስተርጓምቲ ኣለዋ።
 ቋንቋ ጀርመን ጽቡቕ ክዛረባ ንዘይክእላ ደቂ-አንስትዮ።
 ቋንቋ ጀርመን ንጸማማት ደቂ-አንስትዮ ብምልክት ዝተርጉማለን ደቂ-አንስትዮ ውን ኣለዋ።



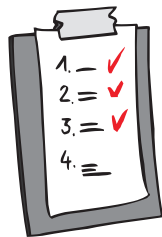
እቶም ሰራሕተኛታት'ውን ከሰንዩኺ እዮም።
ንኣብነት፡ ናብ ቤት-ፍርዲ ወይ ናብ ሰብ-መዚ መንግስቲ።
ወይ ድማ ናብ ማእከላት ምክሪ።



ጠበቓ ኣብ ሰሙን ኣንሳብ ናብቲ መዕቆቢ ስደተኛታት
ይመጽእ።

እቲ ጠበቓ ከማኸረኪ ይኸእል እዩ።
ንኸማኸረኪ እትኸፍልዮ ወጻኢታት የለን።

እንተደኣ ናብቲ ቆጶራ ከትከዲ ኮይንኪ፡
ደቅኺ ከጸንሑልኪ/ክሕለዉልኪ ይኸእሉ እዮም።



**ነዚ ዝስዕብ ወረቓቕቲ/ሰነዳት ናብ
መዕቆቢ ደቂ-ኣንስትዮ ክትወስድዮ ኣለኪ፡**

- ናትኪ መለለዩ መንነት/ታሴራ
- ናይ ደቅኺ መለለዩ መንነት
- ምስክር ወረቐት ናይ ደቅኺ ዕለተ-ልደት
- መረጋገጺ ኣታዊታት፡
ከምዚ ይብል፡ ክንድ'ዚ ገንዘብ ትረኽቢ።
- ጀርመናዊያን ንዘይኮና ደቂ-ኣንስትዮ፡ ፓስፖርት።
ወይ ድማ ከምዚ ዝብል ትሕዝቶ ዘለዎ ወረቐት/ሰነድ፡
ኣብ ጀርመን ክትጸንሑ ተፈቂዱልኪ ዘሎ ድምር ግዜ።
- ናይ መድሕን ካርድ ካብቲ መድሕን/ኢንፎርገን ዝኣተወልኪ ትካል።
- ከቢድ ጸገም ከምዘለኪ ዘረጋግጽ መለለዩ መንነት
- ዶኩመንቲታት ካብ ባንክ።
- ኣድራሻ ናይ ኣገደስቲ ዶክተራት።



ክትማልእዮም ዘለኪ፡ -

- መድሃኒታት።
- ክዳዉንቲ።
- ደቅኺ ዝጥቀምሉ ንብረት ናይ ትምህርቲ
- ደቅኺ ዝጻወትሉ ባምቡላታት



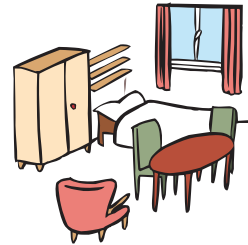
ናይ ስደተኛታት ኣፓርታማታት።

ኣፓርታማ ናይ ስደተኛታት እንታይ እዩ?

በይንኺ ምስ ደቅኺ ኣብቲ ኣፓርታማ ክትነብሪ ትክእሊ ኢኺ።

ወይ ድማ ምስ ካልኦት ኣደታትን ቆልዑን ኣብ ናይ ሓባር ኣፓርታማ ክትነብሪ ትክእሊ።

ኣብኡ ናይ በዓልኪ ክፍሊ ክትረኽቢ ኢኺ/ክወሃብኪ እዩ። ኣድራሻታቱ ስቴር/ምስጢራዊ እዩ።



ነቲ ኣፓርታማ ክራይ ክትከፍልሉ ኢኺ።

ገንዘብ እንተዘይብልኪ፡
ሓገዝ ሕተቲ።



ማሕበራዊ ሰራሕተኛ ብዛዕባቲ ትሓትዮ ዘለኺ ጉዳይ ክተሓገዝኪ ይክእል እዩ።

ወይ ድማ ዝኾነ ሕቶታት ወይ ጸገማት እንተሃልዩኪ።
እቲ ማሕበራዊ ሰራሕተኛ ኣሰንዩኪ ክኸይድውን ይክእል እዩ።
ንኣብነት፡ ናብ ቤት-ፍርዲ ወይ ናብ ሰብ-መዚ መንግስቲ።
ወይ ድማ ናብ ማእከላት ምክሪ።



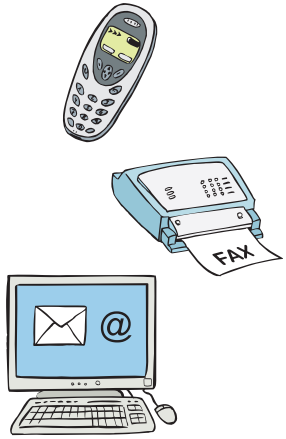
ኣብ ገለ ናይ ስደተኛታት ኣፓርታማታት፡ ንቆልዑ ዝወሃብ ኣገልግሎታት ኣሎ።
ምስቶም ዓበይቲ ኣወዳት ደቅኺ ናብ ካልእ ናይ ስደተኛታት ኣፓርታማታት ክትግዕዚ ትክእሊ ኢኺ።
ደቅኺ ዋላ ልዕሊ 14 ዓመት ይኹን ዕድመኡም።



ናብ ናይ ስደተኛታት ኣፓርታማ መዓስ ክትግዕዚ ትክእሊ?

- እንተደኣ ኣብ ኣፓርታማኺ ክትጸንሒ ዘይትክእሊ ኮይንኪ።
- እንተደኣ ናብ መዕቆቢ ደቂ-ኣንስትዮ ክትግዕዚ ዘይትክእሊ ኮይንኪ።

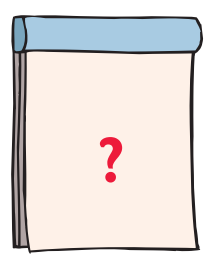
ንኢፓርታማ ናይ ስደተኛታት ብኸመይ ክትረኽቡ ትኽእሉ?



- ናብ ቤት-ጽሕፈት ናይ'ቲ ኢፓርታማ ስደተኛታት ክትድዉሊ ትኽእሉ።
- ወይ ድማ ብቴሌፎን ናይ ጽሑፍ መልእኽቲ/SMS ክትሰዲ ትኽእሉ።
- ብኢመይል ክትጽሕፍሎም ትኽእሉ።
- ወይ ውን ፋክስ ክትልእክሎም ትኽእሉ።

ቁጽሪ ቴሌፎን ኣብ ዳሕረዋይ ክፋል ናይ'ዚ ንእሽቶ ሓበሬታ መጽሓፍ ክትረኽቡ ትኽእሉ።

ብድሕሪ'ዚ እንታይ ይኸውን?



ኣብቲ ቤት-ጽሕፈት ቆጸራ ክተሓዘልኪ እዩ።
 ኣብኡ፡ ነቲ ናይ ስደተኛታት ኢፓርታማ ዝምልከት ሓበሬታ ክትረኽቢ ኢኺ።
 ነቶም ሰራሕተኛታት ከተዕልልዮም/ክትዛረቡሎም ትኽእሉ።
 ነቲ ዘጋጠመኪ ንግዳም ክትነግርዮም ትኽእሉ።
 ከምኡ ድማ ሕቶታት ክትሓትዮም ትኽእሉ።



ሓደ ሓደ ግዜ ነቲ ናይ ስደተኛታት ኢፓርታማ ዘርኢ ኣሳእል ኣብቲ ቤት-ጽሕፈት ክትዕዘቢ ትኽእሉ።
 ብድሕሪ'ዚ ብዛዕባኡ ደጊምኪ ክትሓስቢ ትኽእሉ።
 ወይ ናብኡ ክትግዕዘሉ ትደልዩ ወይ ድማ ኣይትደልዩን ትኾኑ።
 ናብኡ እንተደኣ ግዲዝኪ፡
 እቶም ሰራሕተኛታት ንጠለባትኪን ጸገማትኪን ኣብ ዝምልከት ክተሓሳስቡ እዮም።

6። ኣብያተ-ፍርዲ ብኸመይ ክሕግዛኹ ይኸእላ?

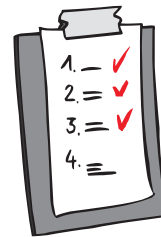


ንጎነጽ ዝከላኸል ሕጊ ኣሎ።
ምስ ስድራ-ቤታዊ ቤት-ፍርዲ ብምዃን ብዙሕ ናይ ጥርግን ክታማት ክትእክቢ ትኸእሊ።
በዚ ከኣ ካብ ስግኣት/ፍርሒ ናይ'ቲ ፈጻሚ ጎነጽ ናጻ ትኾኒ።
ከምውጽኢቱ እቲ ጎነጽ ደው ይብል።

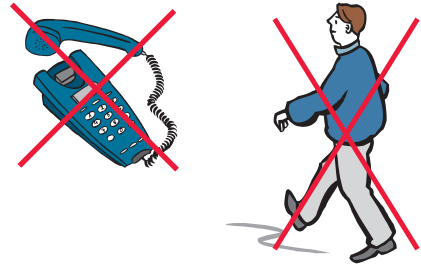


ንኣብነት፡ ነዞም ዝስዕቡ ናይ ጥርግን ክታማት ኣብ ፋይልኪ ክትሕዝዮም ትኸእሊ፡

- ኣብቲ ናይ ሓባር ኣፓርታማ ንበይንኺ ክትነብሪ ከምዝተፈቐደልኪ።
- እቲ ፈጻሚ ጎነጽ ናብቲ ኣፓርታማ ክመጽእ ከምዘይክእል።
- እቲ ፈጻሚ ጎነጽ ናብ ጥቓኺ ክቐርብ/ክመጽእ ከምዘይክእል።
- እቲ ፈጻሚ ጎነጽ ካብ ሕጂ ንደሓር ከሸግረኪ/ከሳቐየኪ ከምዘይክእል።
- እቲ ፈጻሚ ጎነጽ ካብ ሕጂ ንደሓር ክደልየኪ/ከናድየኪ ከምዘይፍቀደሉ።



እቲ ፈጻሚ ጎነጽ ካብ ሕጂ ንደሓር ክጽዋዓኪ ከምዘይክእል።
ብቴሌፎኑ ናይ ጽሑፍ መልእኽቲታት/SMS ክሰደልኪ ይኹን ብኢመይል ክጽሕፈልኪ ከምዘይፍቀዶ።
ወይ ድማ፡ እቲ ፈጻሚ ጎነጽ ካብኺ 50 ሜትሮ ርሒቐ ከነብር ኣለዎ።
ናባኺ ክቐርብ ክኸእል የብሉን።
ናብ ዝኣተኸዮ ክኣቱ የብሉን።



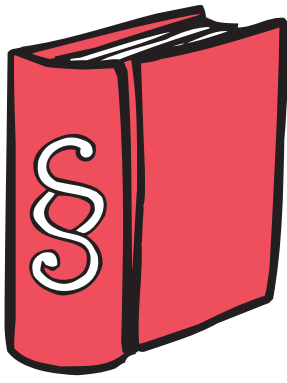
እቲ ፈጻሚ ጎነጽ ብዝኾነ ይኹን መገዲ ነዚ እንተፈጸመዎ
ናብ ፖሊስ ክትድወሊ ትኸእሊ፡ 110
ፖሊስ ድሕነትኪ ከውሕሰልኪ ይኸእል።
ነቲ ፈጻሚ ጎነጽ ከርሕቐልኪ እዮም።
ክቕጻዕ ይኸእል እዩ።



ፖሊስ ክሕግዛኪ ይኸእል እዩ!



ፖሊስ ናይ ገበናዊ ክሲ ፋይል ክኸፍተልኪ እዩ።
ሽው ንስኺ ነቲ ናይ ገበናዊ ክሲ ፋይል ሒዝኮ ናብ ስድራ-ቤታዊ ቤት-ፍርዲ ክትመጹ ኢኺ።



ካልኦት ተወሰኸቲ ሕግታት'ውን ኣለዉ።
 ንኣብነት፡ ገበናዊ ሕጊ።
 ከምዚ ይብል፡
 ንዝተፈላለዩ ገበናት ዝምልከቱ ኣየኖት መቐጻዕቲታት እዮም ዘለዉ።
 ፈጻሚ ጎነጽ ብተግባራቱ ዝቐበሎ መቐጻዕቲ ከ እንታይ እዩ።



ናብ ፖሊስ ገበናዊ ጥርግን ከተቐርቢ ትክእሊ ኢኺ።
 ሽዑ ፖሊስ ከምርምር/ከጻርዮ እዩ።
 እንታይ ኮይንኪ?
 መን እንታይ ፈጻሙ?
 ናይ ሕጊ ጠበቓ ክሕግዘኪ እዩ።

ፖሊስ ብድሕሪ'ዚ መርትዖታት ከናዲ/ክእኩብ እዩ።
 ብድሕሪ'ዚ እቲ ፈጻሚ ጎነጽ ክቐጻዕ ይክእል።
 ኣብ ቅድሚ ገበናዊ ቤት-ፍርዲ።
 ሽዑ ንስኺ ናይ ዓይኒ ምስክር ትኾኒ።
 እዚ ማለት፡ ኩሉ'ቲ ዘጋጠመኪ ዘበለ ነቲ ገበናዊ ቤት-ፍርዲ ክትነግርዮ ኢኺ።

ብድሕሪ'ዚ ተወሳኺ ሓገዡ'ውን ክትረኽቢ ኢኺ።
 እዚ ማለት፡ ስነ-ኣእምሮኣዊ - ማሕበራዊ መስርሕ ምቁጽጻር።
 እዚኣ ጓል-ኣንስተይቲ መካይድቲ/ኣሰናይት እያ።
 ናብ ፖሊስ ምሳኺ ክትመጽእ እያ።
 እንተደኣ ድሌት ሀለኪ ኮይኑ።
 እንተደኣ ክሲ ጠሊብኪ።



ንሳ መብርሂ'ውን ክትህበኪ እያ።
 ነዚ ኣብ ቤት-ፍርዲ ዳሕራይ ክትገብርዮ ኣለኪ።
 ንበይንኺ ናብ ቤት-ፍርዲ ክትከዲ ዮብልክን።
 እታ መካይድቲ ጓል-ኣንስተይቲ ምሳኺ ትኸይድ።
 ኩሉ ግዜ ካብ ጎድንኺ ኣይትፍለን።
 እንታይ ከምዘጋጠመኪ ክትገልጹ እንከለኺ።

ምክልካል ጎነጽ ኣብ ልዕሊ ናብ ክሊኒክ ዝመላለስ ሕሙም

ኣብዚ ቦታ ክትምርመሪ ኢኹ፡

እንተደኣ ግዳይ ጎነጽ ኮይንኪ ኣለኹ።

ናብዚ ክትመጹ ትክእሊ ኢኹ እንተደኣ፡

- እቲ ፈጻሚ ጎነጽ ቃንዛ ኣስዒቡልኪ ኮይኑ።
 - እቲ ፈጻሚ ጎነጽ ጎዲኡኪ/ሃስቶኪ ኮይኑ።
 - እቲ ፈጻሚ ጎነጽ ሓኒቐኪ/ዓቢሱኪ ኮይኑ።
 - እቲ ፈጻሚ ዝበን ምስኡ ብሓይሊ ጸታዊ ርክብ ክትፍጽሚ ኣገዲዱኪ ኮይኑ።
 - ወይ ድማ ስንብራት ናይ ማህረምቲ ኣለኪ ኮይኑ።
- ወይ'ውን ቁስሊታት።

ብድሕሪ'ዚ ናብ ምክልካል ጎነጽ ኣብ ልዕሊ ናብ ክሊኒክ ዝመላለስ ሕሙም ክትከዲ ትክእሊ።
መጀምርያ ትድወሊ።

ብድሕሪኡ ቆጶራ ትፈልዩ/ትሕዚ።

ቁጽሪ ቴለፎን ኣብ ዳሕረዎይ ክፋል ናይ'ዚ ንእሽቶ ሓበሬታዊ መጽሓፍ ክትረኽቡን ትክእሊ።

ጓል-ኣንስተይቲ ዶክተር ክትምርምረኪ እያ።

ንኹሉ ቁስሊታትኪ ብካሜራ ክትስእሎ እያ።

ንኹሉ ቁስሊታትኪ ቡብሓደ ክትምዝግቡ እያ።

ብድሕሪ'ዚ ንስኹ ክትውስኒ ትክእሊ።

ነቲ ዝጸሓፈትልኪ ደብዳቤ/ወረቐት ክትጥቀምሉን ዘይክትጥቀምሉን።



ብድሕሪኡ ድማ ክትውስኒ ትክእሊ።

ነቲ ዝጸሓፈትልኪ ደብዳቤ/ወረቐት ክትጥቀምሉን ዘይክትጥቀምሉን።

ንኣብነት፡ ናብ ፖሊስ።

እንተደኣ ኣብ ልዕሊ'ቲ ፈጻሚ ጎነጽ ክሲ ንክምስረት ጸቕጢ ክግበረልኪ ትደልዩ ኮይንኪ።

ወይ ድማ ናብ ቤት-ፍርዲ።



መተሓሳስቢ/መዘኻኸሪ፡




እንተደኣ መድመይቲ ኣጋጢሙኪ። ወይ እንተደኣ ገለ መስበርቲ ኣጋጢሙኪ፡
ሽው ናብ ዶክተር ትኸዲ።
ወይ ድማ ናብ ሆስፒታል ትኸዲ። ናብ ማእከል ህጹጽ ሕክምናዊ ረዲኤት።



አገደስቲ አድራሻታት።

እንተደኣ በቲ ዘጋጠመኪ ዘቤታዊ ጎነጽ ሓገዝ ትደልዩ ኣለኹ ኮይንኪ።
ንዘቤታዊ ጎነጽ ዝምልከት ምኽሪን ሓበሬታን ትደልዩ ኣለኹ ኮይንኪ።

ፖሊስ

-  ቁጽሪ ተለፎን: 110
-  ናይ ህጹጽ ረዲኤት ፋክስ: 110
-  አንላይን: www.polizei.berlin.de





ክፍሊ መጥፋእቲ ሓዊ

-  ቁጽሪ ተለፎን: 112
-  ናይ ህጹጽ ረዲኤት ፋክስ: 112
-  አንላይን: www.berliner-feuerwehr.de

ናይ ደቂ-አንስትዮ ፕሮጀክትታት








ሆትላይን ቢ.አይ.ጂ/BIG

-  ቴለፎን: 0 30 – 6 11 03 00
-  ፋክስ: 0 30 – 61 07 45 65
-  ኢሜይል: info@big-hotline.de
-  ኢንተርኒት/መርበብ ሓበሬታ: www.big-hotline.de

ንዘቤታዊ ጎነጽ ዝምልከታ ሞያዊያን ማእከላት ምኽሪን ናይ ጣልቃ ኣብያተ-ጽሕፈት

ናይ ደቂ-አንስትዮ መአከቢ ቦታ (ኒዩኮሊን/Neukölln)





	ቁጽሪ ተለፎን:	0 30 – 6 22 22 60
	ፋክስ:	0 30 – 62 70 55 18
	SMS	01 51 – 56 74 09 45
	ኢሜይል:	frauentreffpunkt@skf-berlin.de
	ኢንተርኔት/መርበብ ሓበሬታ:	www.offenesozialarbeit-sfk.de








ኣገልግሎት ስንክልና ንዘለወን ደቂ-አንስትዮ:

ጓል-አንስተይቲ ሰራሕተኛ ናይ'ዚ ትካል **ቅሩብ** ናይ ቋንቋ ምልክታት ትፈልጥ እያ።
ንተጠቀምቲ ዓሬባ/ዊልቸር ዝኾና ስንኩላን ዘገልግል ጸፊሕ መደያይቦ ኣለና።
ንቆልዑ ዝወሃብ ኣገልግሎታት: ክንክን: ሓገዝ: ከምኡ ድማ ደገፍ





ፍራውንራውም/Frauenraum (ሚተ/Mitte)

	ቁጽሪ ተለፎን:	0 30 – 4 48 45 28
	ፋክስ:	0 30 – 4 48 45 27
	ኢሜይል:	frauenraum@arcor.de
	ኣንላይን:	www.frauenraum.de

ፍራውን-ቡራቱንግ ቦራ/Frauen-Beratung Bora (ወይብንሲ/Weißensee)





	ቁጽሪ ተለፎን:	0 30 – 9 27 47 07
	ፋክስ:	0 30 – 92 37 52 66
	ኢሜይል:	beratungsstelle@frauenprojekte-bora.de
	ኣንላይን:	www.frauenprojekte-bora.de
	ምኽሪ ብኮምፕዩተር:	https://bora.beranet.info/

ፍራውንበራቱንግ ታራ/Frauenberatung Tara (ሹነበ ሮግ/Schöneberg)

-  ቁጽሪ ተለፎን: 030 – 78 71 83 40
-  ናይ ህጹጽ ረዲኤት ፋክስ: 030 – 78 71 83 49
-  ኢሜይል: frauenberatung.tara@gmx.de
-  አንላይን: www.frauenberatung-tara.de





**ኢንተርካልቶሪል-ፋች-በራቱንግስ-ስቲለ/Interkulturelle Fach-Beratungs-Stelle
ኡንድ ኢንተርቨንሺንስ-ስቲለ/und Interventions-Stelle (ዘለንዶርፍ/Zehlendorf)**

ምክሪን ሓገዛትን ብዝተፈላለዩ ቋንቋታት።





-  ቴለፎን: 030 – 80 19 59 80
-  ፋክስ: 030 – 80 19 59 82
-  ኢሜይል: info@interkulturelle-initiative.de
-  ኢንተርኔት/መርበብ ሓበሬታ: www.interkulturelle-initiative.de

መዕቆቢታት ደቂ-አንስትዮ




ፍራውን-ግውስ ደስ ካሪታስቨርባንደስ/Frauen-Haus des Caritasverbandes

 ቁጽሪ ተለፎን: 030 – 8 51 10 18
 ፋክስ: 030 – 8 51 30 10
 ኢሜይል: frauenhaus@caritas-berlin.de
 ኢንተርኔት/መርበብ
ሓበሬታ: www.caritas-berlin.de





ሀስቲያ-ፍራውን-ግውስ/Hestia-Frauen-Haus

 ቁጽሪ ተለፎን: 030 – 5 59 35 31
 ፋክስ: 030 – 55 48 96 99
 ኢሜይል: pub@hestia-fh.de
 ኦንላይን: www.hestia-fh.de





2። ርእሱ ክኢሉ ባዕሉ ዝመሓደር መዕቆቢ ደቂ-አንስትዮ

 ቁጽሪ ተለፎን: 030 – 37 49 06 22
 ፋክስ: 030 – 37 49 06 20
 ኦንላይን: frauenselbsthilfe-berlin@t-online.de





ፍራውን-ግውስ ኮኮን/Frauen-Haus Cocon

 ቁጽሪ ተለፎን: 030 – 91 61 18 36
 ፋክስ: 030 – 91 61 18 37
 ኢሜይል: info@frauenhaus-cocon.de
 ኦንላይን: frauenhaus-cocon.berlin.de

ፍራውን-ግውስ ቦራ/Frauen-Haus Bora






	ቁጽሪ ተለፎን:	030 – 98 64 332
	ፋክስ:	030 – 98 65 320
	ኢሜይል:	frauenhaus@frauenprojekte-bora.de
	አንላይን:	www.frauenprojekte-bora.de

ኢንተርካልቸሪሰስ ፍራውን-ግውስ/Interkulturelles Frauen-Haus

	ቁጽሪ ተለፎን:	030 – 80 10 80 50
	ናይ ህጹጽ ረዲኬት ፋክስ:	030 – 80 10 80 55
	ኢሜይል:	info@interkulturelle-initiative.de
	አንላይን:	www.interkulturelle-intiative.de

ናይ ስደተኛታት ኣፓርታማታት።

ፍራውናርት ኣውጉስታ/Frauenort Augusta

-  ቁጽሪ ተለፎን: 030 – 28 59 89 77
-  ፋክስ: 030 – 46 60 02 18
-  ናይ ቴለፎን ጽሑፋዊ መልእኽቲ/SMS ን ጸማም 0160 – 66 63 77 8
-  ኢመይል: frauenort-augusta@zukunftbauen.de
-  ኣንላይን: www.frauen-zuflucht.de







ኣገልግሎት ስንክልና ንዘለዎን ደቂ-ኣንስትዮ፡

ደቂ-ኣንስትዮ ሰራሕተኛታት ናይ'ቲ ትካል **ቅሩብ ናይ** ቋንቋ ምልክት ይፈልግ እየን።

ፍሎተ ሎተ/Flotte Lotte

-  ቴለፎን: 030 – 4 16 70 11
-  ፋክስ: 030 – 40 71 35 92
-  ኢመይል: info@flotte-lotte-berlin.de
-  ኢንተርኔት/መርበብ ኣበሬታ: www.flotte-lotte-berlin.de

ፍራውንዚመር ኢ. ቪ. /Frauenzimmer e. V.





-  ቁጽሪ ተለፎን: 030 – 78 75 015
-  ፋክስ: 030 – 78 75 016
-  ኢመይል: frauenzimmer-zuflucht@web.de
-  ኢንተርኔት/መርበብ ኣበሬታ: www.frauenzimmer-ev.de

ኣገልግሎት ስንክልና ንዘለዎን ደቂ-ኣንስትዮ፡







ሓደ ናይ ስደተኛታት ኣፓርታማ ዓሬባ ስንኩላን/ዊልቸር ይኣትዎኦ እየን። ዓይነ-ሰዉርቲ ዝኾነት ጓል-ኣንስተይቲ መሪሑዎ ዝኾይድ ከልቢ ምስኣ ክት ማላእ/ከተምጽእ ትኽእል።





ሀስቲያ-ዙፍለችሱ-ዎህ-ገገን/Hestia-Zufluchts-Wohnungen

 ቁጽሪ ተለፎን: 030 – 4 40 60 58
 ፋክስ: 030 – 44 05 50 40
 ኢሜይል: zuwo@hestia-ev.de
 አንላይን: www.hestia-ev.de





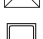
ማቲልደ ኢ. ቪ ./Matilde e. V.

 ቁጽሪ ተለፎን: 030 – 56 40 02 29
 ፋክስ: 030 – 5 64 75 62
 ኢሜይል: frauenzentrum.Mathilde@gmx.de
 አንላይን: www.frauenzentrum-matilde.de

ኦፊንሲቭ 91 ኢ. ቪ ./offensiv '91 e. V.

 ቁጽሪ ተለፎን: 030 – 63 22 38 45
 ፋክስ: 030 – 6 31 60 01
 ኢሜይል: info@frauenhaus-cocon.de
 አንላይን: frauenhaus-cocon.berlin.de



ፓውላ ፓንክ/Paula Panke

 ቁጽሪ ተለፎን: 030 – 4 85 47 02 or
 030 – 4 85 47 01
 ፋክስ: 030 – 48 09 98 47
 ናይ ቴለፎን ጽሑፋዊ መልእኽቲ/SMS ን
 ጸማም 0163 – 9 60 63 82
 ኢሜይል: zufluchtswohnung@paula-panke.de
 አንላይን: www.paula-panke.de




አገልግሎት ስንክልና ንዘለዎን ደቂ-አንስትዮ፣ ደቂ-አንስትዮ ሰራሕተኛታት ናይቲ ትካል **ቅሩብ ናይ** ቋንቋ ምልክት ይፈልግ እየን።

ዙፍ ኢ. ቪ ./ZUFF e. V.






-  ቴሌፎን: 030 – 6 94 60 67
-  ፋክስ: 030 – 69 81 83 58
-  ኢሜይል: mail@zuffwohnungen.de
-  ኢንተርኔት/መርበብ
- ሓበሬታ: www.zuffwohnungen.de

ወላዎን ተወሰኝቲ ማእከላት ምክሪን ናይ መንበሪ ገዛዒቲ ፕሮጀክትታትን

ኢንተርካልቶሪለስ ም-ፕሮጀክት/Interkulturelles Wohn-Projekt






-  ቁጽሪ ተላፎን: 030 – 80 10 80 10
-  ፋክስ: 030 – 80 10 80 15
-  ኢሜይል: info@interkulturelle-initiative.de
-  ኦንላይን: www.interkulturelle-initiative.de

**ማድቸን-ኖትዲንስት/Mädchen-Notdienst
ክሪሲስ-ዎኑንግ ሾን ዊልድወዘር ኢ. ቪ ./Krisen-Wohnung von
Wildwasser e. V.**






-  አድራሻ: ቦርነማነስትራብ 12/Bornemannstraße 12
13357 ቦርሊን
-  ቁጽሪ ተላፎን: 030 – 21 00 39 90
-  ፋክስ: 030 – 21 00 39 91
-  ኢሜይል: maedchennotdienst@wildwasser-berlin.de
-  ኦንላይን: www.wildwasser-berlin.de

ንጹታዊ ጎነጽ ዝምልከታ ማእከላት ምኽሪ






ፍራውን-ሰልብስቲልፊ ኡንድ ቦራቱንግ/Frauen-Selbsthilfe und Beratung

-  አድራሻ: ፍራስንስትራብ 6/Friesenstraße 6
10965 ቦርሊን
-  ቁጽሪ ተለፎን: 030 – 69 39 192
-  ፋክስ: 030 – 69 38 852
-  ኢሜይል: selbsthilfe@wildwasser-berlin.de
-  አንላይን: www.wildwasser-berlin.de






ማድቸን-ቦራቱንግስ-ስቲለ ሚተ/Mädchen-Beratungs-Stelle Mitte

-  አድራሻ: ደክስንስትራብ 47/Dircksenstraße 47
10178 ቦርሊን
-  ቁጽሪ ተለፎን: 030 – 28 24 427
-  ፋክስ: 030 – 28 48 49 15
-  ኢሜይል: dircksen@wildwasser-berlin.de
-  አንላይን: www.wildwasser-berlin.de

ኢንተርካልቸሪለ ምንግሩፕ ፋር ማድቸን ዶኒ ኤ/ Interkulturelle Wohngruppe für Mädchen Donya






-  አድራሻ: ውሬዘነር ስትራብ 10/11/Wriezener Straße 10/11
13359 ቦርሊን
-  ትለፎን: 030 – 48 62 82 11
-  ፋክስ: 030 – 48 62 82 12
-  ኢሜይል: donya@wildwasser-berlin.de
-  ኢንተርኔት/መርበብ
ሓበሬታ: www.wildwasser-berlin.de

ኪ.ዝ/KIZ (ኪንድ ኢም ዘንት-ሩም/Kind im Zentrum)

-  አድራሻ: ማክስትራብ 3ኤ/Maxstraße 3a
13347 በርሊን
-  ቁጽሪ ተለፎን: 030 – 2 82 80 77
-  ፋክስ: 030 – 2 82 93 90
-  ኢሜይል: kiz@ejf.de
-  አንላይን: www.ejf.de





ላራ/Lara

ፋችስተለ ጀንን ሰክሹዋሊሴርተ ጀዋልት አን ፍራውን*/Fachstelle gegen sexualisierte Gewalt an Frauen*

-  አድራሻ: ፋገርስትራስ 19/Fuggerstrasse 19
10777 በርሊን
-  ቁጽሪ ተለፎን: 030 – 2 16 88 88
-  ፋክስ: 030 – 2 16 80 61
-  ኢሜይል: beratung@lara-berlin.de
-  አንላይን: www.lara-berlin.de

ፍራውን-ናሽት-ካፈ/Frauen-Nacht-Café






ቮን ዊልድዋዘር ኢ.ቪ ./von Wildwasser e. V.

-  አድራሻ: ማረሰሽትራብ 14/Mareschstraße 14
12055 በርሊን
-  ቴለፎን: 030 – 61 62 09 70
-  ኢሜይል: frauenmachtcafe@wildwasser-berlin.de
-  ኢንተርኔት/መርበብ
ሳብሬታ: www.wildwasser-berlin.de






አብዚ አብ እዋን ለይቲ ሓገዝ ክትረኽቡ ትኽእሉ ኢኹ።

ተወሰኑት ማእከላት ምክራውን አለዋ






ነትዝወርክ ቢሃይንደርተር ፍራውን በርሊን ኢ. ቪ. / Netzwerk behinderter Frauen Berlin e. V.

-  አድራሻ: ላይነትራሰር 51/Leinestraße 51
12049 በርሊን
-  ቁጽሪ ተለፎን: 030 – 61 70 91 67 or
030 – 61 70 91 68
-  ፋክስ: 030 – 67 96 83 20
-  ኢሜይል: info@netzwerk-behinderter-frauen-berlin.de
-  አንላይን: www.netzwerk-behinderter-frauen.de

ለስበንበራቱንግ/Lesbenberatung



-  አድራሻ: ኩልመር ስትራሰ 20/Kulmer Str. 20
10783 በርሊን
-  ቁጽሪ ተለፎን: 030 – 21 52 000
-  ፋክስ: 030 – 21 91 70 09
-  ኢሜይል: info@lesbenberatung-berlin.de
-  አንላይን: www.lesbenberatung-berlin.de

ጀዋልትስቩትዝአምቡላንዝ ቻሪተ/Gewaltschutzambulanz Charité




-  አድራሻ: ቢርክንስትራሰ 62: ኤቾ.ኤስ/Birkenstraße
62, Hs. ኤን/N
10559 በርሊን
-  ቁጽሪ ተለፎን: 030 – 450 570 270
-  ፋክስ: 030 – 450 7 570 270
-  ኢሜይል: gewaltschutz-ambulanz@charite.de
-  ኢንተርኔት/መርቡብ
ሓበሬታ: www.gewaltschutz-ambulanz.charite.de

በርሊን ሞት ደንበት ኪንደር-ሹትዝ/Berliner Notdienst Kinder-Schutz




ሆትላይን ኪንደር-ሹትዝ/Hotline Kinder-Schutz

-  ቁጽሪ ተለፎን: 030 – 61 00 66
-  ኦንላይን: www.berliner-notdienst-kinderschutz.de




ኪንደር-ሞት ደንበት/Kinder-Notdienst

-  አድራሻ: ጊትሺነር ስታራስ 48/49/Gitschiner Straße 48/49
10969 በርሊን
-  ቁጽሪ ተለፎን: 030 – 61 00 61
-  ኦንላይን: www.kindernotdienst.de

ማድቸን-ሞት ደንበት/Mädchen-Notdienst

-  አድራሻ: ሚይንደነር ስታራስ 14/Mindener Straße 14
10589 በርሊን
-  ቁጽሪ ተለፎን: 030 – 61 00 63
-  ኦንላይን: www.berliner-notdienst-kinderschutz.de

ጁንድ-ሞት ደንበት/Jugend-Notdienst

-  አድራሻ: ማይንደነር ስታራስ 14/Mindener Straße 14
10589 በርሊን
-  ቁጽሪ ተለፎን: 030 – 61 00 62
-  ኦንላይን: www.berliner-notdienst-kinderschutz.de

ሕጋዊ።

ነዚ ንእሽቶ ናይ ሓበሬታ መጽሓፍ መን አዳልዩዎ? አብቲ ንእሽቶ ሓበሬታዊ መጽሓፍ በዕል መን አበርኪቶም?



“ሹትዝ-ማስናመን ፋር ፍራውን ሚት በሂንደሩንገን/Schutz-Maßnahmen für Frauen mit Behinderungen” እዩ ተሓቲሙ።

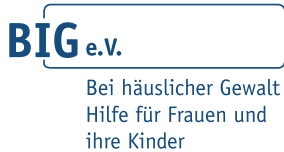
እተን ኣብኡ አበርክቶ ዝገበራ ማእከላት ድማ፡

- በራቱንግስ-ሽተለ ፍራውንትረፍፕንክት/Beratungs-Stelle Frauentreffpunkt
- እተን መዕቆቢታት ደቂ-አንስትዮ ድማ፡ ፍራውን-ሃውስ ደስ ካሪታስ-ፈርባንደስ/Frauen-Haus des Caritas-Verbandes ፍራውን-ሃውስ ሀስቲያ/Frauen-Haus Hestia 2። ርእሱ ክኢሉ ባዕሉ ዝመሓደር መዕቆቢ ደቂ-አንስትዮ
- እተን ፕሮጀክትታት ናይ ስደተኛታት ኣፓርታማታት ከአ፡ ፍራውዎርት ኣውጉስታ/Frauenort Augusta ፍራውንዚመር/Frauenzimmer ፓውላ ፓንክ/Paula Panke
- ሆትላይን ቢ.አይ.ጂ/BIG ከምኡ ድማ ምውህሃድ ቢ.አይ.ጂ/BIG
- ፖሊሳይ በርሊን/the Polizei Berlin
- ደስ ነትዝቨርክ በሂንደርተር ፍራውን በርሊን/das Netzwerk behinderter Frauen Berlin
- ዲ ሰናትስ-ፈርዋልቱንግ ፋር ገሱንድሃይት፡ ፍለገ ኡንድ ግለ ይሽተሉንግ፡ ረፈራት ፍራውን ኢን በዞንዶረን/die Senats-Verwaltung für Gesundheit, Pflege und Gleichstellung, Referat Frauen in besonderen ኮንፍሊክት-ኡንድ ለበንስ-ላንን/Konflikt- und Lebens-Lagen.

ነቶም ጉጅለ ሰራሕተኛታት ኣብዚ ዝስዕብ ቦታ ክትረኽቡዎም ትኽእሉ፡

- ኣድራሻ፡ ቢ.አይ.ጂ-ኮኦርዲኔሽን/BIG-Koordinierung ደርላቸር ስትራሰ 11 ኤ/Durlacher Straße 11 a 10715 በርሊን
- ኢመይል፡ mail@big-koordinierung.de
- አንላይን፡ www.big-koordinierung.de

እዚ ንእሽቶ ሓበሬታዊ መጽሓፍ'ዚ ብጉጅለ ሰራሕተኛታት



እቶም ኣሳእል፡ ኣብ ካሰል/ Kassel ብዝመደበሩ ረይንሂልድ ካሲንግ/
Reinhild Kassing እቶም ተቐቢኡም።
© ረይንሂልድ ካሲንግ/© Reinhild Kassing

በርሊን ኢኒሽያቲቭ ገን ገሽልት ኣን ፍራውን/Berliner Initiative
gegen Gewalt an Frauen
ቢ.ኣይ.ጂ.ኤ. ቪ. /BIG e.V.
ጎደና ዱርላኻር 11 ኤ • 10715 በርሊን/Durlacher Str. 11 a • 10715 Berlin
ቴሌፎን 030 61 70 91 00/Telefon 030 61 70 91 00
ቴሌፋክስ 030 61 70 91 01/Telefax 030 61 70 91 01
mail@big-koordinierung.de
www.big-koordinierung.de

and



ሰናት-ፈርቫልቱንግ ፋር ዝገድህይት፡ ፍለገ ኡንድ ግላይሽሽተሉንግ/
Senats-Verwaltung für Gesundheit, Pflege und Gleichstellung
ኦራኔንስትር/Oranienstr. 106 • 10969 በርሊን/Berlin
ንዝኾነ ይኹን ሕቶታት፡
ሱዳና ቱመ/ጠዓመ
ቴሌፎን፡ (030) 9028 – 2138
ፋክስ፡ (030) 9028 – 2066
ኢሜይል፡ Susanna.Thieme@senaif.berlin.de

ናይ 2016 ሕታም

BIG KOORDINIERUNG

Bei häuslicher Gewalt · Hilfe für Frauen und ihre Kinder